



SS77USSG

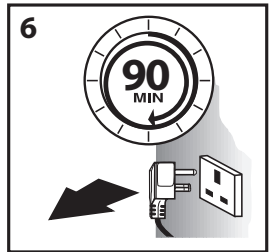
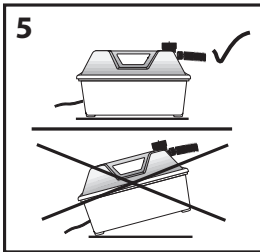
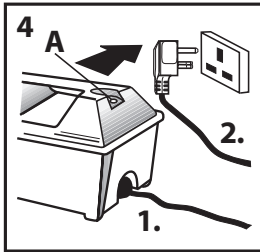
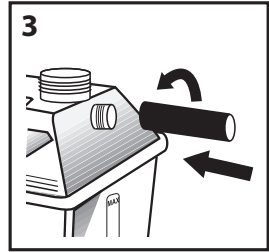
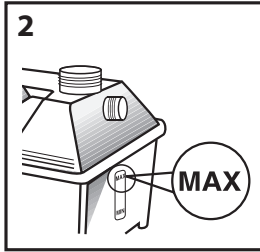
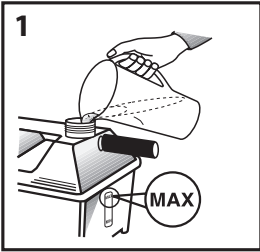


Steam Generator

.....
Operating Manual
.....

EN
.....

1

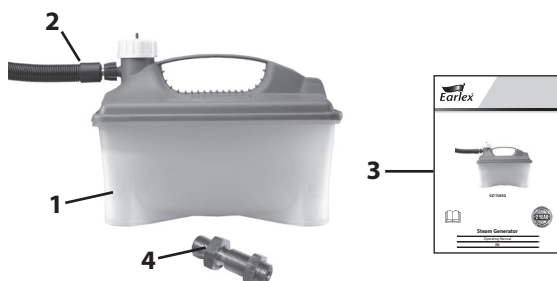


MANY THANKS FOR PLACING YOUR TRUST IN US

The operating instructions are part of the unit. Keep them in a safe place! Read these operating instructions carefully and in full before using the unit.

Scope of delivery

- 1 Boiler
- 2 Steam hose
- 3 Operating manual
- 4 Hose adapter
- 5 Cordset (not shown)



Explanation of symbols used

	This symbol indicates a potential danger to you or for the tool. Under this symbol you can find important information on how to avoid injuries and damage to the power tool.
	Beware of steam.
	Indicates tips for use and other particularly useful information.

General Safety Instructions

CAUTION! *Read all the instructions. Non-observance of the instructions below can cause electric shock, fire and/or serious personal injuries.*



- a) **Keep your workplace clean and well lit.** *Disorderly or unlit workplaces may result in accidents.*
- b) **Never use the tool in hazardous areas that contain flammable liquids, gases or dusts.** *Power tools generate sparks that can ignite the dust or vapours.*
- c) **Keep children and other persons away when using the power tool.** *You can lose control of the tool if you are distracted.*

- d) **The tool plug must fit into the socket-outlet. The plug may not be modified in any form. Do not use adaptor plugs together with grounded tools.** *Unmodified plugs and suitable sockets reduce the risk of an electric shock.*
- e) **Avoid physical contact with grounded surfaces such as pipes, heating elements, stoves and refrigerators.** *The risk through electric shock increases if your body is grounded.*

Safety Instructions for Steam Generator



Attention! When working with hot steam (min.212°F), there is a risk of serious scalding. Hot steam and boiling water can emit when the safety valve (4 A) is activated due to overpressure in incorrect operation of the unit.



Only change position during use, with care. The steam unit, hose and accessories can be very hot. Always wear suitable protective clothing / gloves.

Operate the unit only with pure water without agents or additives. Do not switch the unit on when empty.

This device is not to be used for space heating purposes.

Never point the hose adapter / accessories at people, animals or at objects sensitive to temperature. **Always ensure that the unit is standing securely in a horizontal position (on the floor) (Fig. 5).**

Do not stand on or place objects onto the unit or steam hose. Never over-twist or make kinks in the steam hose, and never block the valve. Only carry the unit by its handle. Never pull on the steam hose or supply cord.

Never submerge the unit in liquid. Every time the accessory is changed for filling / refilling and emptying or when the steam unit is not in use (including work pauses), pull the mains plug out of the socket-outlet. Never overfill the unit. Unplug the mains plug in the event of overfilling or a fault.

Use only EARLEX **original spare parts and accessories!**



Caution! Danger of short-circuits! Cover socket-outlets and switches and do not subject them to steam.

Use only a 3-wire extension cord that has a 3-blade grounding plug, and a 3-slot receptacle that will accept the plug on a product. Make sure your extension cord is in good condition and of a heavy gauge to carry the maximum current as shown below:

16 AWG for leads up to 25' in length.

12 AWG for leads up to 50' in length.

10 AWG for leads up to 100' in length.

Ensure extension lead is protected at the mains source by a 15A rated circuit-breaker in accordance with UL489.

The unit switches off automatically in case of overheating. After approx.10 minutes, the unit switches itself back on automatically.

The steam time is approximately 90 minutes. Never leave a unit unattended if switch is on. Keep the unit away from children and animals. Don't boil dry.



Before loosening the filler cap always allow the unit to cool down for at least 2 minutes. Caution! Risk of scalding!

How to Build a Steam Box - Safety Instructions

Bending wood with steam can be **dangerous** and should only be performed by experienced woodworking enthusiasts. **Thick, heat resistant gloves** are recommended as the steam can easily burn unprotected skin on contact. Also keep your face clear from any areas where steam may escape and burn you. Steam is a very effective medium for bending wood. Most hardwoods will bend better than softwoods.

Steam boxes can be built using plywood or hardwood; just make sure that it can stand up to moisture and heat. Your steam box should be tight, but not too tight. The steam should be able to surround your wood-piece and flow through the steam box. The steam box could build up pressure and **possibly explode** if the steam does not adequately flow through the steam box and pressure relief holes. The best way is to build a relatively tight box and **drill steam holes** in the base so that the steam and condensation can escape. You should have a **steady stream of steam escaping through all vents**. You will need to make sure that your wood pieces are supported in your steam box and that the steam surrounds your wood on all sides. **Dowel rods work the best** as metal rods can heat up and burn your wood as well as yourself.

As a wooded steam box, you can use common 1 x 6 material or 3/4" thick plywood. A 5' x 5' interior dimension with a 3' -5' length for use with your Steam Generator. You should have a **door opening with hinges and a latch**. A rubber weather stripping can be used to seal a leaky door.

The brass-threaded fitting (hose adaptor) that is supplied with your Steam Generator is designed to fit a 0.531" dia hole. Drill this hole in your steam box and separate the fitting, placing one end through the steam box with the thread that will connect to the hose sticking out of the steam box. Screw the other part of the fitting onto the fitting inside the steam box and tighten up to ensure a good seal. There should be no movement of the connector once tightened up.

Ideally the steam box should be on a **slight incline** for condensation to drain to one end and exit the steam box.

Fill your steam generator with clean water, do not add any additives. **DO NOT FILL ABOVE MAX LEVEL LINE** on Steam Generator base. The steam up time will be controlled by how much water you fill the Steam Generator with and the temperature of the water.

The Steam Generator is designed to provide 90 mins of steam. If you require less steam time, half fill the Steam Generator.

Place your wood-pieces into the steam box and connect the hose to the steam box and Steam Generator. Plug the Steam Generator into a grounded outlet, preferably one protected by a GFCI or ALICI. The Steam Generator will automatically start to heat up.

When starting we recommend that you insert a **meat thermometer** through a small hole to read the temperature. You want to reach 212°F, or as close as possible. Once you have reached this temperature start timing how long your

wood needs to be steamed. A general rule to follow is that you should steam the wood for **1 hour per every inch thickness of the wood. So for ½" thick pieces you should allow 30 minutes.** You will **need a mould or jig** to hold the wood in place until it dries out after you remove such from the Steam Box.

This is a general outline on building a Steam Box.

There are many websites available to use for more detailed instructions.

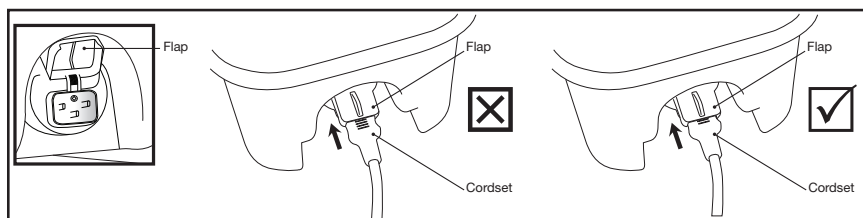
Operation

- Remove filler cap and fill unit with clean water to the MAX level line indicator. Replace cap (Fig. 1+2).
- Screw hose onto threaded outlets of boiler and hose adapter, hand-tight is sufficient. Do not overtighten (Fig. 3).
- Connect supply cord from unit to power socket-outlet and switch on (Fig. 1, 4).



Important: When connecting the cordset to the unit, make sure the flap is fully open and does not prevent the plug being fully inserted. Refer to diagram below.

If the flap touches the ribs on the cordset it may prevent the cordset inserting fully into the unit.



- It can take up to 15 mins (approx.) before steam is produced - depending on fill water quantity and temperature.
- Do not leave unattended and keep children and pets out of the room.
- Just before full steam production a small amount of bubbling and water will occur at the hose adapter.
- Beware of hot water discharge prior to steam emission.
- Operate steamer until water level is low, then unplug unit and allow to cool for at least 2 minutes (Fig. 1, 7).



Warning: Hot liquid or steam can burn. Danger of scalding. Steam may also condense into boiling droplets. Steam should not be directed towards electrical appliances. Danger of scalding appears on the cap as either symbol.

Beware of steam - before removing the filler cap and refilling unit. When finished, allow to cool completely and empty unit. Always store unit empty.

Model	Boiler Capacity	Steam Time
SS77USSG	5L	90 Minutes*

*Approx steam time before the safety cut-out operates.

Descaling



Regular descaling is key to your steamer functioning properly. Depending on water hardness, descale the steam wallpaper generator after 10 – 15 fills. Units which are defective due to a lack of descaling are excluded from the warranty!

- Use a standard proprietary descaling agent. Observe the manufacturer's instructions for use!
- Mix the descaling agent with water (ratio 1:1).
- Fill with around 4pt 4floz of descaling solution.
- Plug in and switch on for 10 minutes.
- Switch off again and disconnect the mains plug.
- Leave the descaling solution to work for 30 minutes.
- Completely empty steamer
- Thoroughly rinse the unit two to three times with clear water to remove all descaling solution residue.

Storage

Store emptied, upright and dry.

Technical Data

Power source:	120 V ~	Power consumption:	1500W
Steaming time:	90 min.	Hose length:	6'6"
Boiler capacity:	8pt 8floz	Unit weight:	6lbs 4oz§

Correction of Malfunctions

Malfunction	Cause	Remedy
The steam generator is not working	<ul style="list-style-type: none"> • Adapter blocked • Heating element covered in limescale • Too little water in tank. A safety cut out is fitted to prevent overheating of element if there is little water in tank • Unit at an angle, heating element is not in water 	<ul style="list-style-type: none"> → Clean → Clean → Fill with more water. Wait 2 minutes. Refill will reset the cut-out element → Move unit into horizontal position

Accessories

Further information about the EARLEX range of products for decorative preparation is available on www.earlex.com.

Environmental protection



The tool and all accessories and packaging have to be recycled in an environmentally friendly manner. Do not dispose of the tool with household waste. Support environmental protection by taking the tool to a local collection point or obtain information from a specialist retailer. Leftover paint and solvents must not be emptied into drains, the sewage system or disposed of as household rubbish. It has to be disposed of separately as special waste. Please pay special attention to the instructions on the product packaging.

Important Note regarding Product Liability!

In accordance with an EC directive, the manufacturer is liable for his product only if all parts originate from or were approved by the manufacturer and the tools are assembled and operated correctly. The use of other accessories and spare parts can partially or completely invalidate the liability.

2 years warranty


The warranty runs for two years, counting from the date of sale (sales slip). It covers and is restricted to free-of-charge rectification of faults which are demonstrably attributable to the use of faulty materials in manufacture, or assembly errors; or free-of-charge replacement of the defective parts. The warranty does not cover incorrect use or commissioning or fitting or repair work which is not stated in our operating instructions. Wearing parts are also excluded from the warranty. The warranty excludes commercial use. We expressly reserve the right to fulfil the warranty. The warranty expires if the tool is opened up by persons other than manufacturer service personnel. Transport damage, maintenance work and loss and damage due to faulty maintenance work are not covered by the warranty. Under any warranty claim, there must be proof of purchase of the tool through submission of the original receipt. Wherever legally possible, we exclude all liability for injury, damage or consequential loss, especially if the tool has been used for a purpose other than that stated in the operating instructions, commissioned or repaired other than in accordance with our operating instructions or if repairs are performed by someone who is unqualified. We reserve the right to perform any repairs in excess of those stated in our operating instructions. In case of warranty or repair, please refer to your point of sale. This warranty does not affect your statutory rights. This warranty excludes use for hire purposes.



Wagner Spraytech Corporation

1770 Fernbrook Lane

Plymouth, MN 55447

 888-783-2612

www.earlex.com

Not responsible for errors and changes.